

Toad for Oracle's AppDesigner

You can use AppDesigner to automate and control processes you perform regularly. Connection information, window settings, and queries can be saved, shared, scheduled and run from the command line or batch files to simplify repetitive tasks.

This document contains information that is also found within Toad Help/Contents/Managing Projects/Using AppDesigner to Control Toad.

Introduction

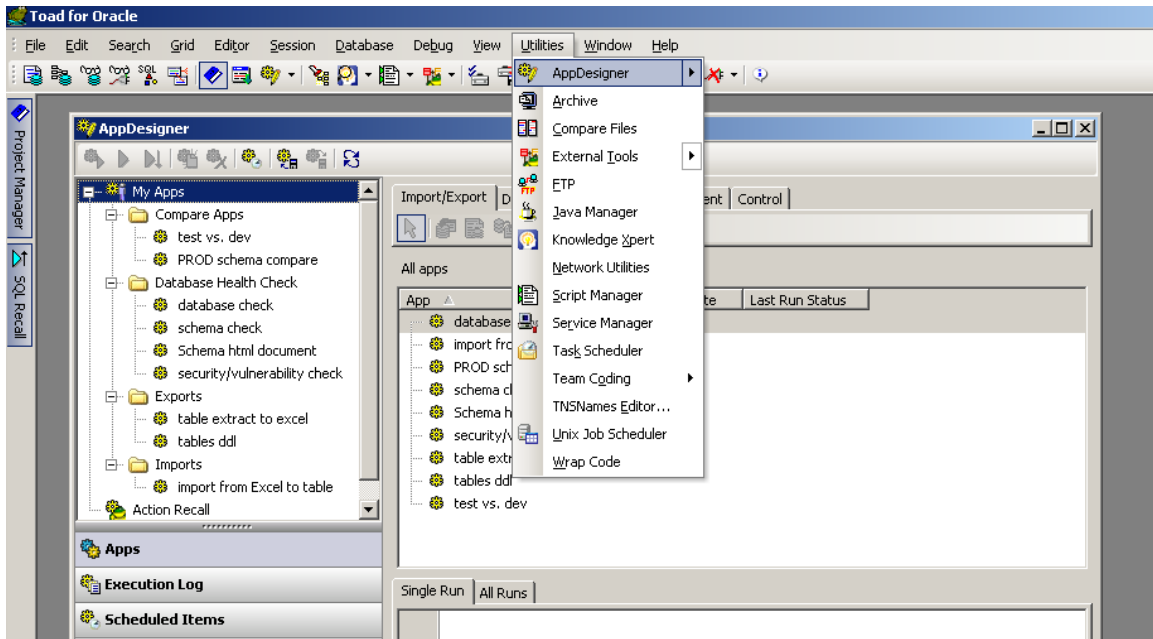
The AppDesigner feature allows Toad users to create "mini-applications" within the App Designer, and schedule these tasks. In addition, many of the tasks Toad users may already perform can now be saved as an "Action", and "Actions" are now managed within the Toad AppDesigner.

The AppDesigner makes use of several categories to control Toad. These include:

- **Action** - A piece of Toad functionality encapsulated for the purpose of executing, scheduling, sharing and building Apps.
- **App** - One or more Actions designed to work together as a mini Toad application.
- **Scheduled Item** - An app or action that has been scheduled using the Windows Task Manager.
- **Execution Log** - A log file containing the execution status of recently-run apps. It is automatically generated as you run actions, and contains data up to 7MB. When it reaches 7MB, old data is trimmed back to 5MB, and then it continues accruing. In this way it remains a current log of the most recent action execution.

The AppDesigner allows users to create Toad Apps, from within the AppDesigner. However, there are also many windows and features within Toad, that now have the ability to "save/recall" those steps, or options selected within a Toad window. These are called Toad "Actions", and by default, Toad will save these Actions, and a user can quickly access them within the AppDesigner, and build Apps from existing Actions.

The AppDesigner is found in Toad Oracle 9.7 under the Utilities menu, Utilities/AppDesigner. There is also an icon on the main toolbar.



The AppDesigner is the central location for running and creating Actions and Apps. While actions can be created from and loaded to many of the other windows within Toad, the power of actions is located in the Apps Designer.

Within the Apps Designer you can:

- Create new actions
- Organize actions into sets (apps)
- Run actions and apps
- Store actions and apps
- Schedule actions and apps
- Copy actions and apps to and from the clipboard

Toad features, or actions, that can be used in the AppDesigner, are grouped as tabs, and there are certain actions available with these tabs.



The current actions available with these tabs include the following:

Import Export

- Import Table Data
- Export DDL
- Export Dataset

DB Misc

- ANSI join syntax
- Actionable Query
- Execute Script
- Object Search
- DB Health Check
- HTML Schema Documentation
- Compare Schemas

Utilities

- Email
- Shell Execute
- Archive
- FTP
- Ping
- TNS Ping
- Service
- Format Files

File Management

These actions control your file structure. You can use them to create and move files and directory structures, check to see if files exist, and delete files and directories.

- Create Directory
- Delete Directory
- Move Directory
- Create File
- Delete File
- Move File
- Copy File
- File Exists

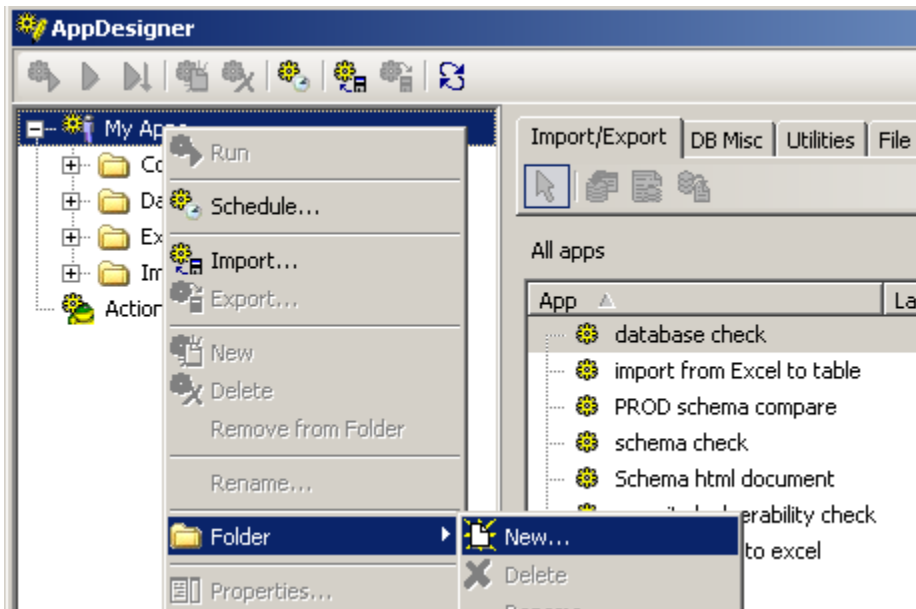
Control

These items are used only within the AppDesigner. They can be used to control how an app behaves.

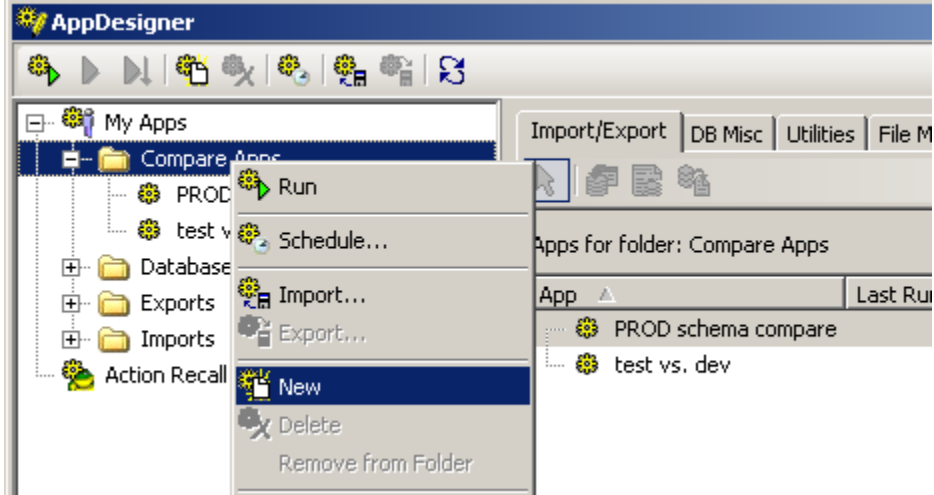
- If...Then...Else
- Repeat...Until
- While...Do
- Test Variable
- Set Variable
- Variable Prompt
- Message
- Pause
- File Iterator
- Folder Iterator
- List Iterator

Building the App

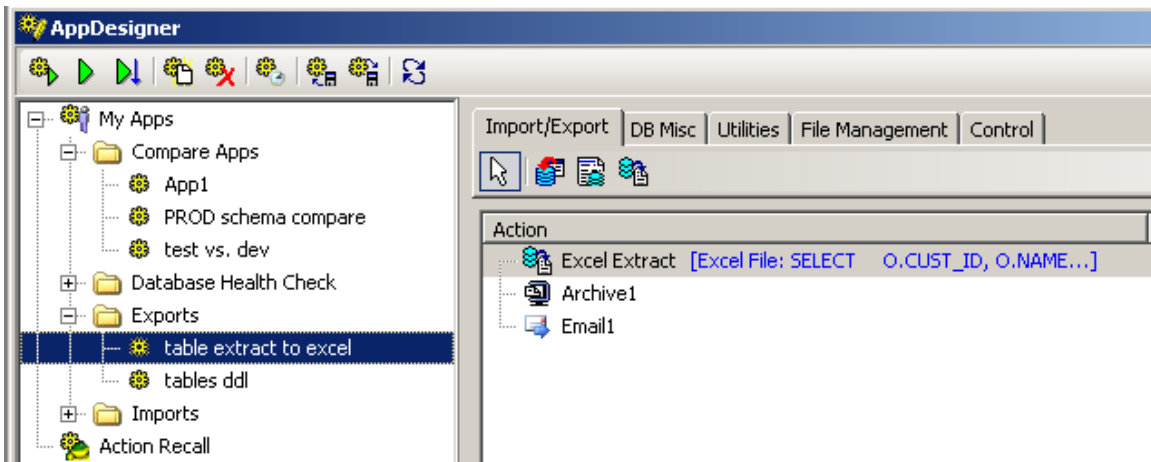
To build Apps from within the AppDesigner, a helpful first step is creating one or more folders, to group similar types of Apps, or environments, etc.



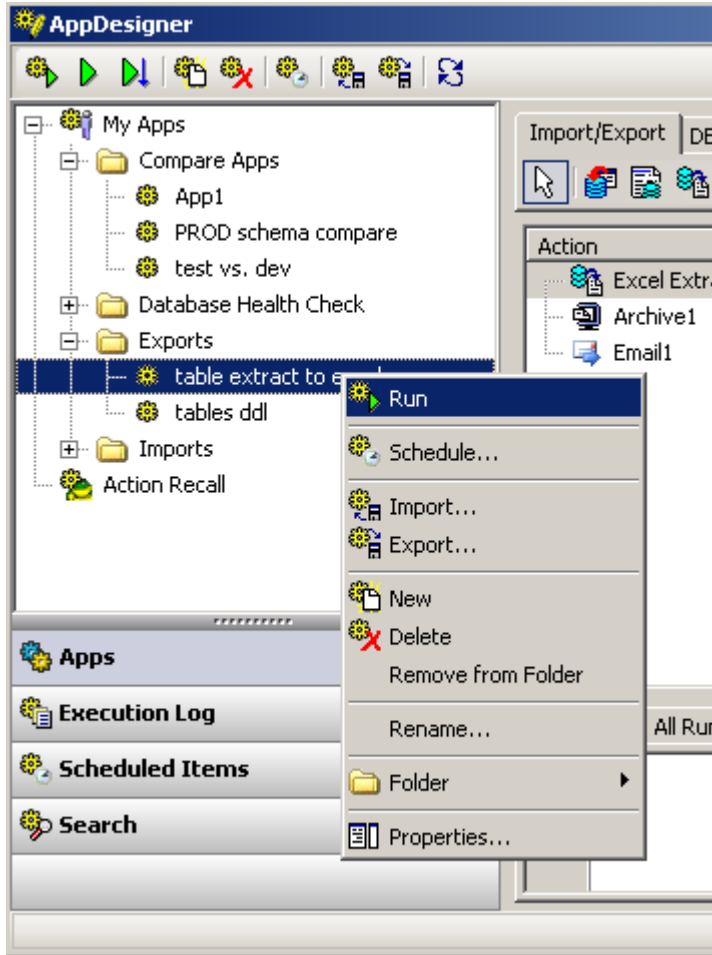
After creating a Folder, you can right click, to add a New App:



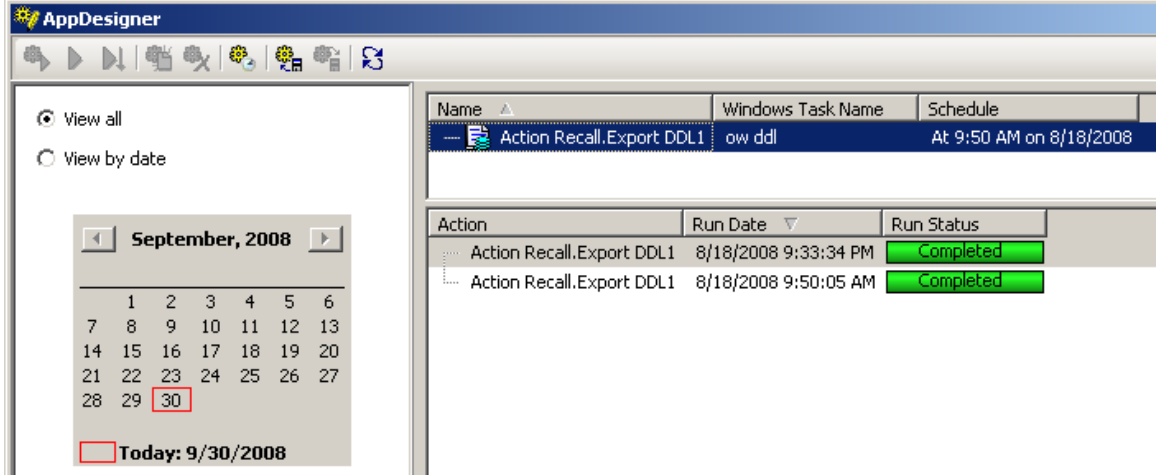
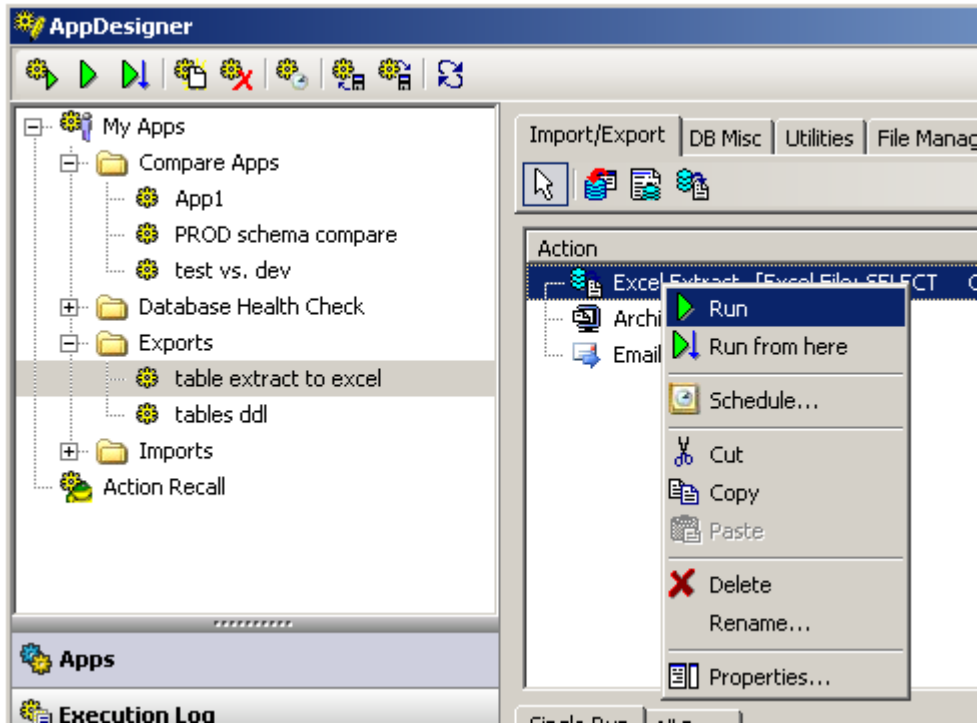
Once the App is created, you will notice that the Action tabs are enabled (Import/Export, DB Misc, Utilities, File Management, and Control). Now you can click on the type of action, or multiple actions, that make up that App. In this screen shot, this App contains multiple actions: Export/Archive/Email.



Now you can also right click on the App, and there is a list of choices, including Run and Schedule:

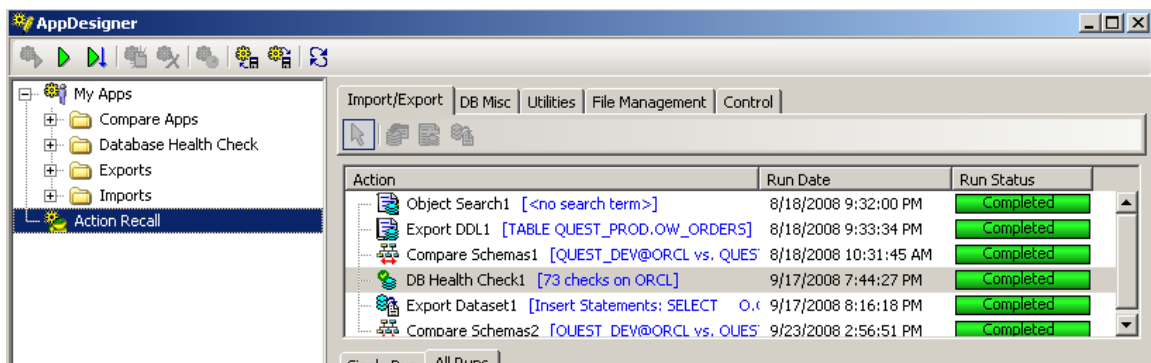


The Actions that make up the App can be cut and pasted to other Apps, can be reordered, as well as providing the ability to run just 1 action, that may reside within an App.

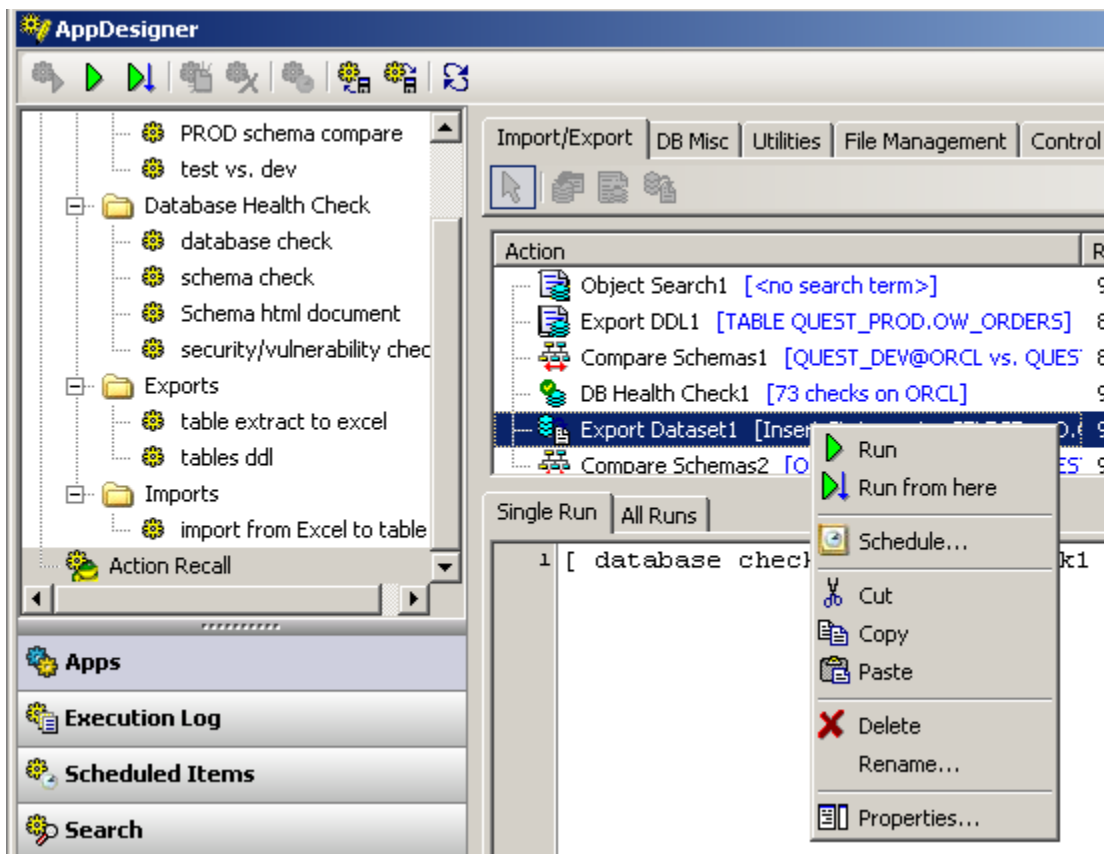


Action Recall

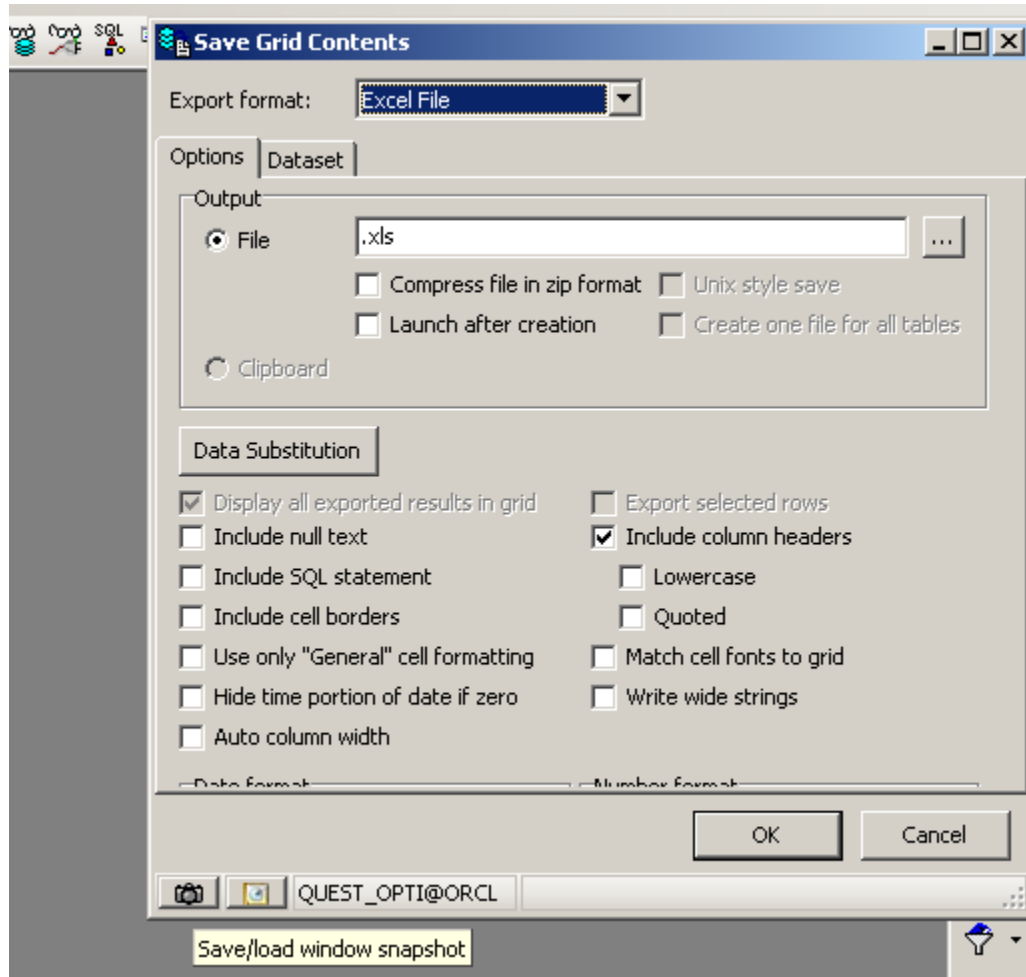
Another way to quickly build Toad Apps is by exploring the Action Recall within the AppDesigner. By default, Toad stores 10 actions per action type (for example, 10 export DDLs, 10 export dataset (Grid|Save As) and so on. However, this number can be changed easily within Toad options.



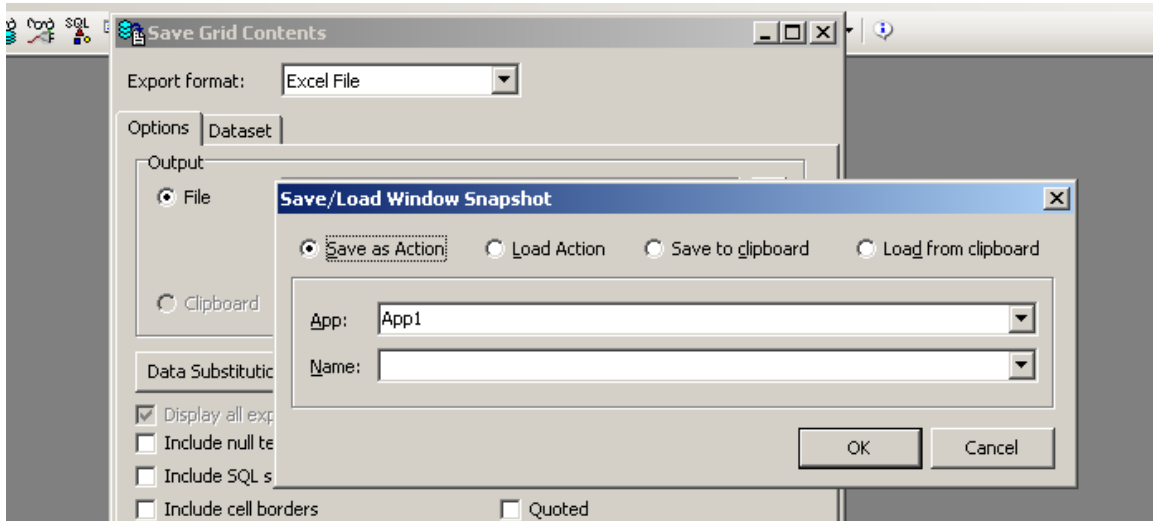
From within the Action Recall, you can right click on an Action, and cut and paste to add that Action to an existing App.



You can create Toad Actions as you are using Toad, by clicking on the camera/snapshot icon now found on the bottom left corner of many Toad windows.

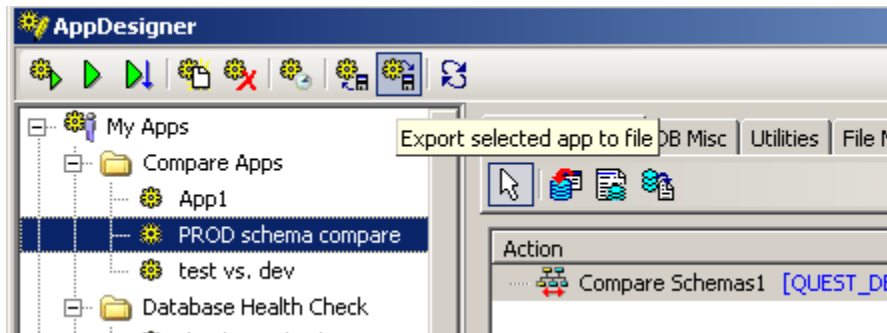


Clicking the camera icon will allow you to create a Toad Action that can be added to an App. This is also how you can open an action that may already exist that has settings for that task you are performing.



There are also options to Save to clipboard and Load from clipboard, which are helpful options for sharing Toad Actions by email with other Toad users. There is detailed documentation in Toad Help regarding emailing actions via the clipboard.

Toad Apps can be Imported and Exported, amongst teams or other Toad Users. A user can share or email an App to another Toad user, and then by opening that App, it can be customized to specific user settings.



Summary

The AppDesigner is a very powerful feature in Toad to help automate tasks you need to perform on a regular basis. Apps are made of actions that can be created from within the AppDesigner. Action Recall with the AppDesigner leverages Toad's ability to "recall" actions in Toad that you have already performed and may need to repeat. This allows a Toad user to save time spent on repetitive tasks. Toad Apps are also a great way to collaborate across teams by sharing these actions and apps via the clipboard and email, as well as importing/exporting Toad Apps through the AppDesigner.

About the Author

Devin Gallagher is a Solutions Architect for Quest Software, with more than 12 years of experience with database development and administration. Devin has been supporting Toad for Oracle since 1999, and now also supports a number of different products in the Toad family, across multiple RDBMS.